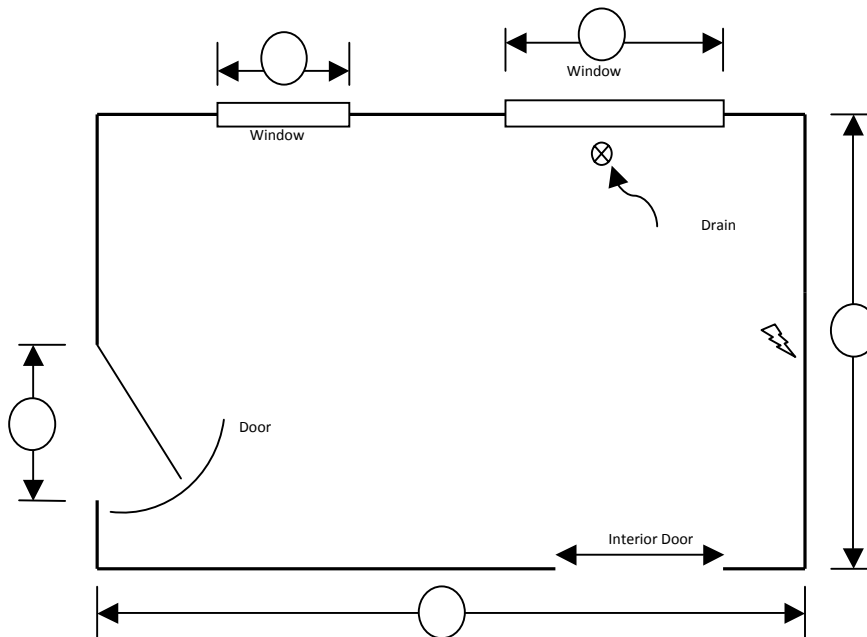


## ***Kitchen Layout cont.***



When laying out your kitchen the adage more is better for measurements is the rule.

Don't be shy in taking more measurements than are shown

Above is an example of a sample kitchen

When taking the measurements for your kitchen always go drywall to drywall. It is usually easier to start in one corner and move in a clockwise direction around the room.

Once you have the main measurements of your walls it is time to measure and show all windows, doors or pass-thru's.

Indicate sink/drain and appliance locations and if they are movable. Existing appliance measurements, vent and drain locations are required. If you are purchasing new appliances we will require the new dimensions or an indication of any size limitations.

Finally bring the layout to our kitchen design centre where one of our sales associates can begin the design process of your new kitchen